

WorkForce Productivity

RADLEY Solution Suite for IFS Users

IFS/DC - DATA COLLECTION AND MORE

WORKFORCE DIRECTOR

DEVICE MANAGEMENT

INTELLILABEL®

WEB SUPPLIER-LABELING

PRODUCTIVITY MONITOR

PLC/MACHINE INTEGRATION



Immediate
Error Alerts



Shipment
verification
by multiple
criteria



Streamlined
cycle and
physical
inventory
counting



Instant
notifications
as materials
are received



On-line
queries,
downloads,
and label
prints



Capture of
actual
production
labor time



WORKFORCE PRODUCTIVITY — BEYOND DATA COLLECTION

From Automated Data Collection to business-to-business EDI, Radley Corporation is committed to bringing a fully-integrated productivity solution to manufacturers worldwide. And productivity is all about managing all of your resources wisely and efficiently.

Enhancing Your IFS Investment

Radley's WorkForce Productivity Suite for IFS users is a mobile computing and data collection system that provides a complete work force optimization solution. By streamlining data entry and daily operations, and automating manufacturing and material handling transactions, Radley's IFS/DC provides a user-friendly interface and enhanced functionality to IFS transaction management.

Delivering the real time information that is critical to adapting to today's ever changing business climate, IFS/DC validates from the IFS database and updates IFS with each transaction - as it happens. Without separate databases and manual data entry, better data is available immediately. Personnel can take action while it still matters. Imagine - every material receipt, inventory move, shop order update and shipment pick validated and recorded correctly - right now! Experience the benefits of improved data accuracy, greater productivity and more efficient operational performance.

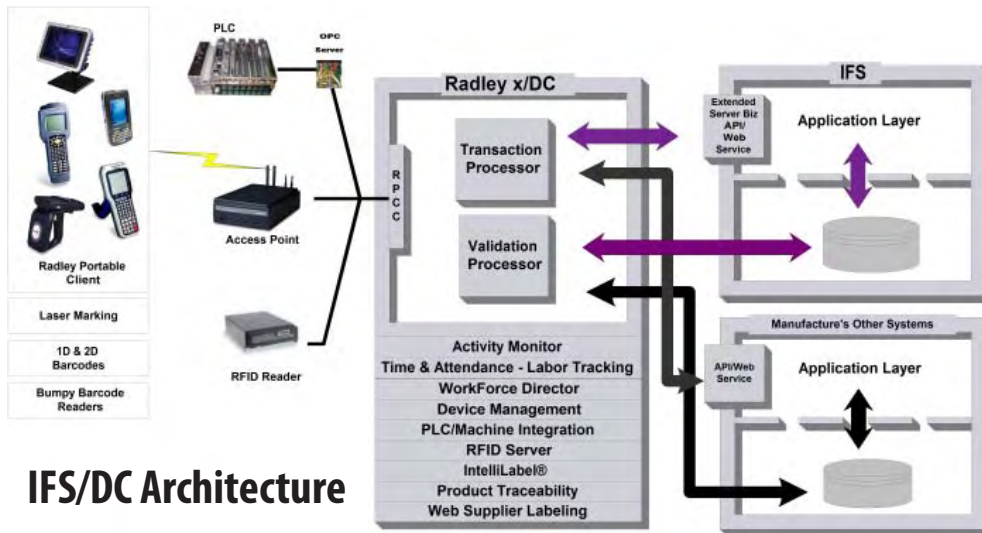
Integrates via XML Messaging!

Preserves Your Configured IFS Business Logic

Eliminates Costly Reimplementation when Upgrading IFS.

ADVANCED ARCHITECTURE

IFS/DC is a .net XML-based barcode/RFID solution. IFS/DC client/server architecture offers performance and availability unachievable by other solutions. This includes configurable graphical user interfaces on mobile devices, RFID filtering and aggregation, and much more. IFS/DC also interfaces with PLC's, scales, palletizing and packaging systems, as well as other manufacturing execution systems for data input during transaction processing.



IFS/DC Architecture

The IFS/DC environment can be installed and managed centrally or distributed to individual manufacturing locations. Data elements are validated in real time against your IFS database. Complete IFS/DC transactions update IFS following your configured rules. IFS/DC keeps a complete history of data collection transactions by serial number and date/time/employee/device for tracking and reporting

Integrated Labeling
 Predefined bar code label formats are delivered for and integrated with each IFS/DC transaction. Label data is pulled from your IFS

database, eliminating manual data entry and outside label databases. You may also tailor the label formats, or produce your own labels, to meet virtually any labeling requirement.

Container Management License Plate System

The IntelliLabel™ intelligent label system allows you to monitor the status of each user-defined container (box, carton, pallet, and their contents) throughout your operations. A single scan of the bar coded "license plate" will update IFS with the status of the master container, as well as the status of each detailed container and/or item inside. IntelliLabel is ideal for automating individual serial part transactions and for *containerizing* inventory and/or shipments.

Device Management

Need help managing your devices on the shop floor? When integrated with Intermec's SmartSystems technology, Device Management offers you the ability to view, manage, and control devices on your system from anywhere on your network. From your desktop using text messaging, you can communicate directly with each wireless device.

PRODUCTIVITY MONITOR

Radley's Productivity Monitor provides user-defined graphical displays of your key performance metrics plus real-time alerts, highly visual, personalized dashboards and reports. Quickly respond to critical business events and take immediate, proactive action. Tightly interfaced with the WorkForce Productivity Suite, the Productivity Monitor uses a standard XML interface to accept and display event data from IFS/DC or other key applications within the enterprise.

WORKFORCE DIRECTOR

Directed picking, replenishment, and putaway operations give your IFS system the functionality of a third-party WMS system without the redundancy and without the costs. Reduce material handling cycle-times, improve FIFO and cross-docking, automated pick replenishment, wave picking, and more. Monitor operating conditions, item locations and quantities to optimize pick routing, space utilization and replenishment. Then set your workforce into action by pushing tasks or status updates triggered by your key performance indicators to the right people on the shop floor. WorkForce Director supports real-time communication with data collection devices and workstations via e-mail and instant messages. Add Radley's Productivity Monitor for up-to-the-minute graphical views of your workforce and your warehouse!

WEB SUPPLIER LABELING

Web Supplier Labeling provides suppliers with secure access to your purchase order data (part #, quantity, etc.) and bar code label formats. The supplier needs only a Windows PC, a web browser, and a bar code label printer. The IFS user assigns each supplier with the data for the specific materials to be shipped by the purchase order. When materials arrive at your receiving dock, quickly scan the labels applied by your supplier — no more printing and applying labels at your receiving dock!

PLC/MACHINE INTEGRATION

Complete your IFS solution and meet your continuous improvement initiatives with reliable automatic data collection from all of your data sources. Automatically collect, analyze and store the real-time activities of each PLC-equipped machine. Remotely monitor your equipment and be notified of events that could effect your productivity. Supports UPC (UA) standards.

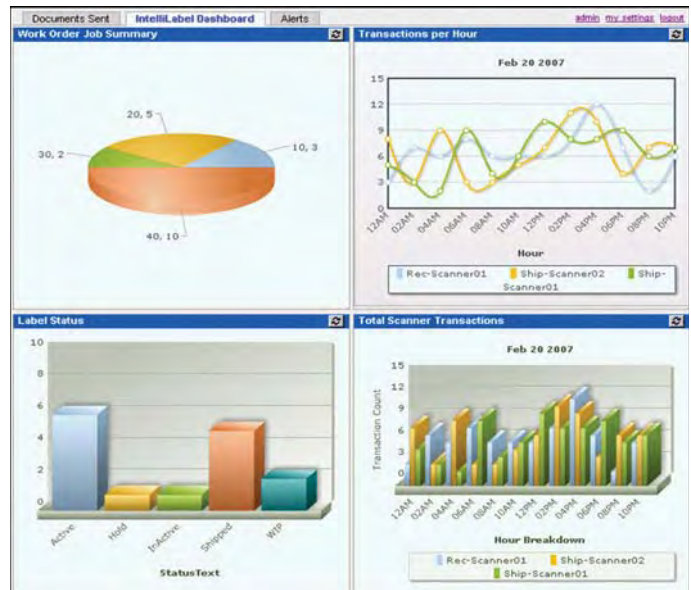
CLIENT-FIRST SOLUTIONS

Radley's solutions are recognized as providing an exceptional return-on-investment and economical total cost-of-ownership. It is our commitment to providing client-first solutions and services that has enabled us to offer the business-specific extended functionality and reduced complexity our clients require.

YOUR GLOBAL IFS SOFTWARE PARTNER

Radley Corporation is a member of the Global IFS Software Partner Program. The Global IFS Software Partner Program enables IFS to offer customers the unique extended functionality they require — available from Radley and supported by IFS.

PRODUCTIVITY — MEASURED AND VISIBLE



Productivity Monitor



"Working with Radley, we are able to deliver the best-of-breed electronic data interchange (EDI) and data collection solutions."

— Rick Veague
IFS North America Chief Technology Officer



"North American Manufacturers expect their enterprise systems provider to deliver advanced product features and complimentary solutions that extend ERP functionality and multiply the value of their ERP investments. One such example is automated data collection. Radley Corporation, with their IFS DC Solution provides superior data collection hardware, software and support that shares a common technology platform with IFS, making integration fast, easy and reliable. As a complimentary solution with IFS, Radley offers IFS users a compelling solution."

— Rick Veague
Chief Technology Officer
IFS North America



RADLEY
CORPORATION

North America
Tel 616-554-9060
www.RADLEY.com

Europe
Tel +31 858.880369 Ext 111
www.RADLEYglobal.com

Jointly Developed by IFS & Radley

- No IFS Modification Required
- Automatic Store and Forward
- Supports Standard IFS Transactions
- Real-Time IFS Integration
- Easily Adapts to Customized IFS Transactions
- Client Server Architecture
- XML Based
- .net Framework
- RFID Ready
- Interfaces with: PLC's, MES, Scales, Bar Code, RFID, PDA's, Cell Phones

Knowledgeable and Confident Workers
Improve Productivity and Maximize your Investment
Ask us about available Service, Support, and Training Options.

AUTOMATED IFS TRANSACTIONS

PO - Purchase Order Arrival	CO - Report Picking of Customer Orders
PO - Purchase Order Receipt to Stock	CO - Report Picking with Differences
PO - Ship Supplier Material	CO - Deliver Customer Order Line
IM - Change Inventory Part Location	CO - Deliver Customer Order Line with Differences
IM - Receive from Transit	CO - Receive Authorized Returns
IM - Query Part Location	CO - Reserve Customer Order Lines
IM - Counting per Inventory Part	CO - Create Handling Unit(s) on Package Verification
IM - Counting per Count Report	CO - Create Delivery Note
IM - Receive Inventory Part	
IM - Issue from Material Requisition	
IM/SF - Issue Material to Project	
IM - Issue Inventory Part	
IM - Scrap Inventory Part	
IM - Transport Task	
SO - Manual Issue Material to Shop Order	
SO - Issue Material to Shop Order from Pick List	
SO - Un-Issue Material from Shop Order	
SO - Receive Shop Order	
SO - Lot Batch Reservation	
SO - Report Labor to Shop Order Operation	
SO - Report Operation Quantity	
SO - Report Component Scrap	
SF/Production Receipt - Receive from Repetitive Job	
SF - Shop Floor Operation Start/Stop	
SF - Shop Floor Operation Location Start/Stop	
	CO - App7 SP3 - Reserve Shipment
	CO - App7 SP3 - Print Bill of Lading
	CO - App7 SP3 - Finalize Shipment
	CO - App7 SP3 - Print Delivery Note
	CO - App7 SP3 - Connect Reserved Lots to Handling Units
	CO - App7 SP3 - Insert Packaging Units into Handling Unit Transaction (Add Package Units)
	WO - Work Order Issue from Pick List
	IFS DC Label Prints
	IM - Material Requisition Pick List Label
	SO - Shop Order Pick List Label